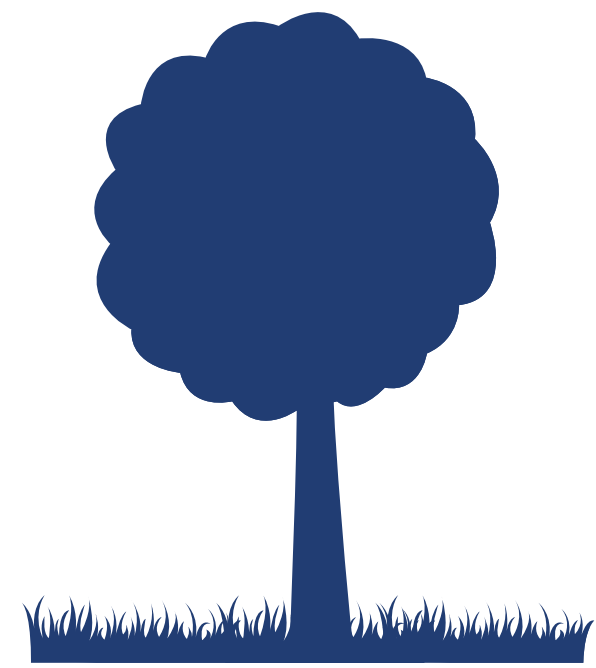


Potential Site: Crystal Valley South / Park School

Future Neighborhood Park Planning



Park Size

10 acres



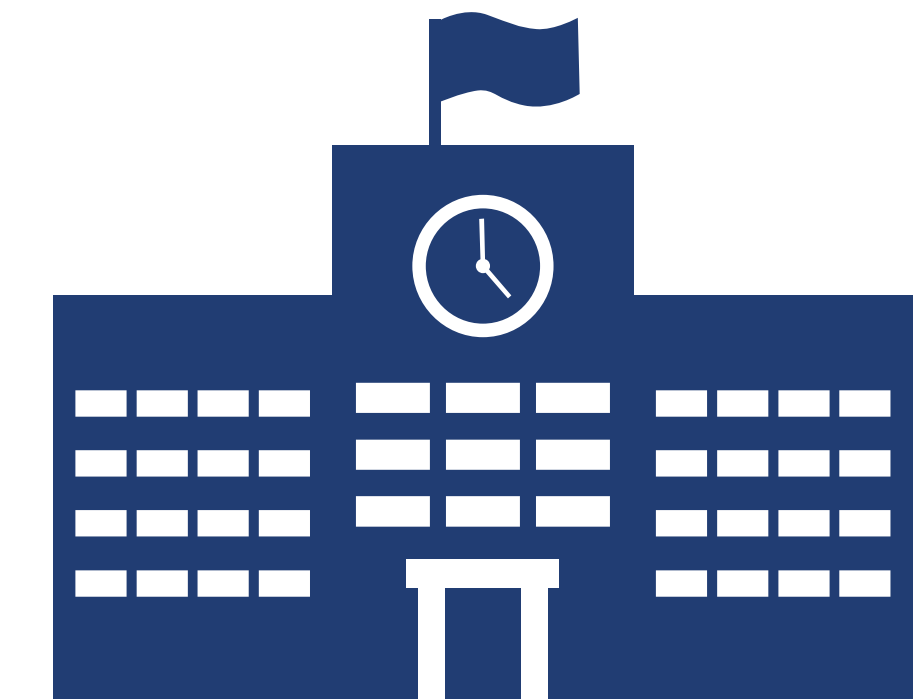
Population Served

278 homes + 112 active permits



Programming Considerations

Future joint park / school site, but no schedule for school development



Public Amenities within 1/2 Mile

None



Trails and Open Space Access within 1/2 Mile

Private planned trail development inside Loop Road



Cost Considerations

- Surrounding infrastructure not yet in place
- Must coordinate development with future school site, which is unscheduled



Existing Amenities within 1/2 Mile

- 1 private swimming pool
- 1 neighborhood community center
- New private amenities under construction include athletic field, dog park, multi-use court, playground and picnic pavilion, slated for completion in 2018



Location

