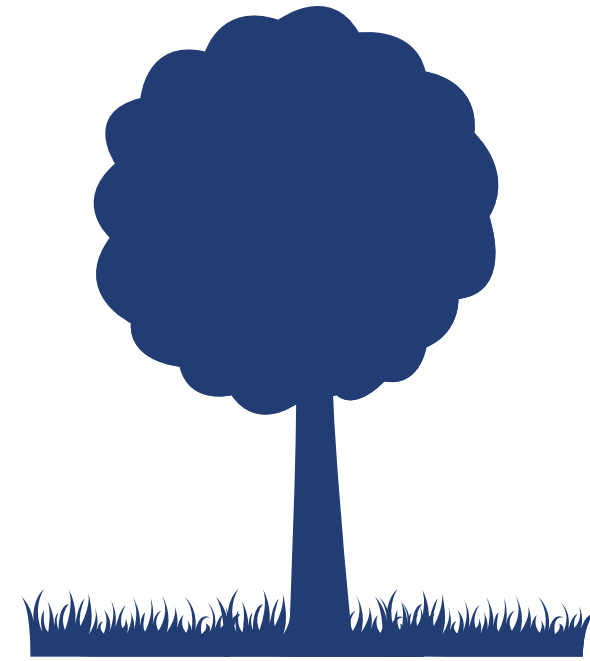


# Potential Site: Meadows F18 Lot 2

## Future Neighborhood Park Planning



### Park Size

5.51 acres



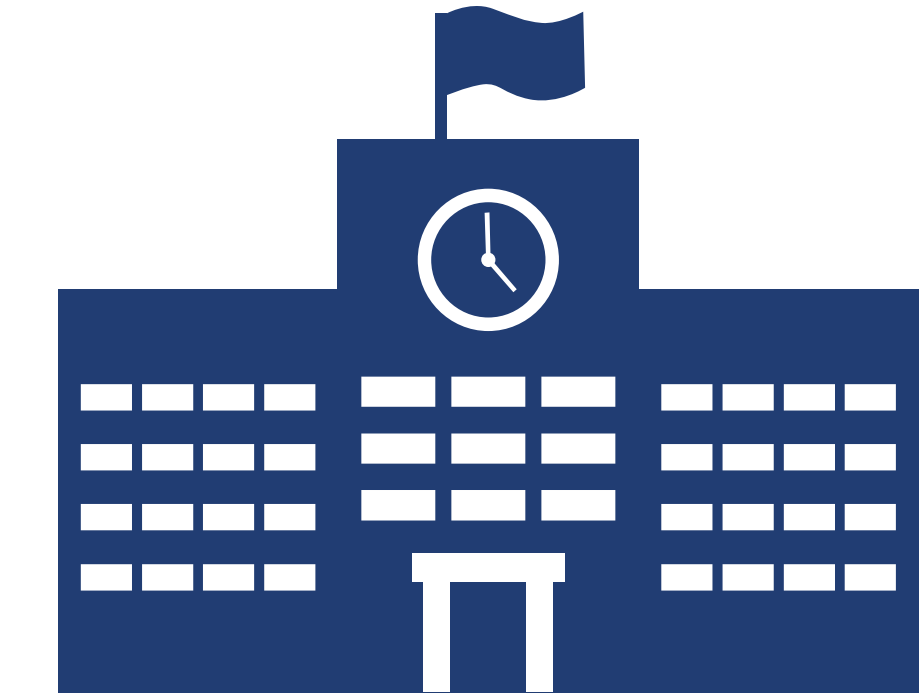
### Population Served

1,182 homes + 130 active permits



### Programming Considerations

- Potential to combine fields with Aspen View Academy for field programming
- Shared parking with Aspen View Academy in evenings and after hours



### Public Amenities within 1/2 Mile

Aspen View Academy Charter School



### Trails and Open Space Access within 1/2 Mile

- Red Hawk trails
- Ridgeline Open Space, paved and soft surface trails



### Cost Considerations

- Graded site
- Overflow parking in place at Aspen View Academy
- Surrounding trails in place
- Smallest of all available sites
- Road access in place



### Existing Amenities within 1/2 Mile

- 1 athletic field
- 4 playgrounds, 1 public + 3 private
- 4 private parks
- 4 private turf play areas



### Location

