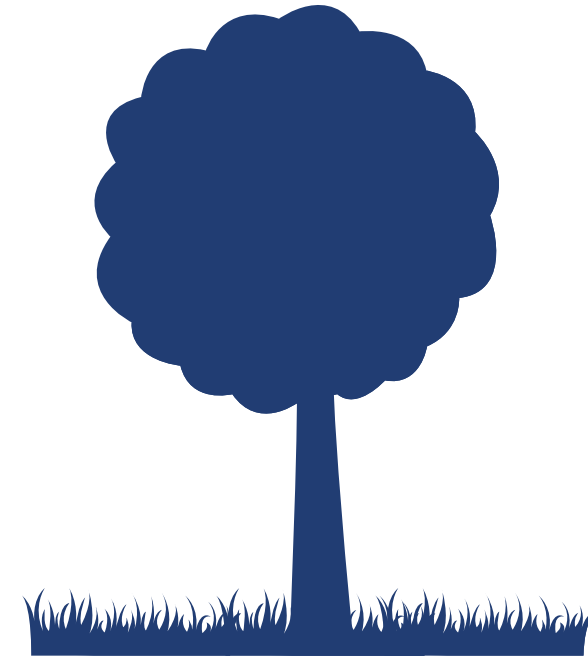


# Potential Site: Terrain Lot 2

## Future Neighborhood Park Planning



### Park Size

10.94 acres



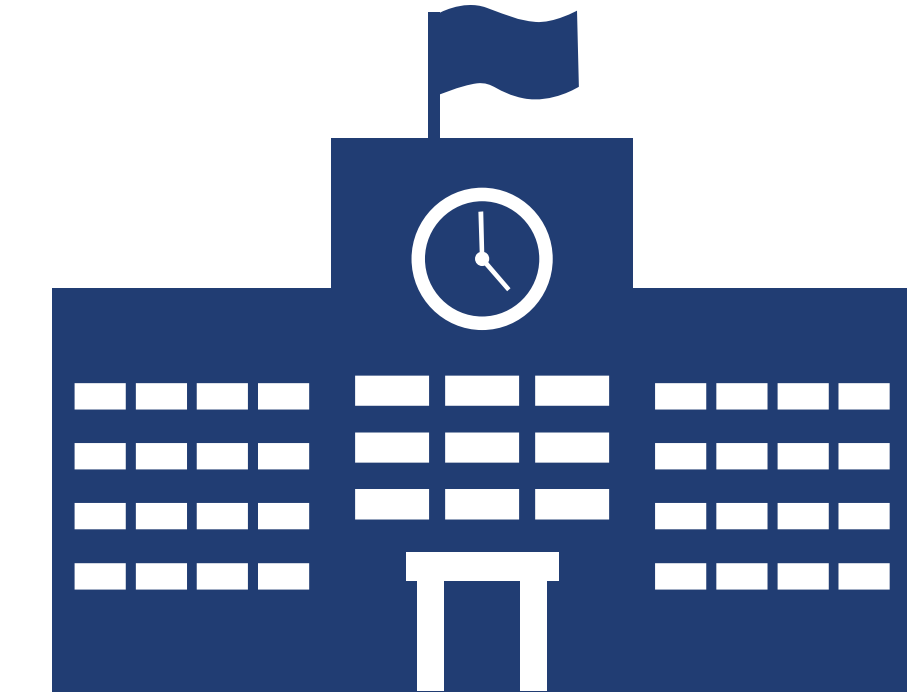
### Population Served

270 homes + 110 active permits



### Programming Considerations

- Adjacent to private recreational amenities
- Larger site for athletic complex development



### Public Amenities within 1/2 Mile

- Sage Canyon Elementary School
- Wrangler Park



### Trails and Open Space Access within 1/2 Mile

Planned McMurdo Gulch Trail / existing trail under electrical transmission lines



### Cost

#### Considerations

- Access road is already in place
- Dry utility move required
- Undisturbed site
- Two points of access
- Water and sewer are available



### Existing Amenities within 1/2 Mile

- 2 athletic fields
- 3 playgrounds, 2 public + 1 private
- 3 pavilions
- 2 private parks
- 1 private swimming pool
- 1 neighborhood community center
- 1 private dog park



### Location

